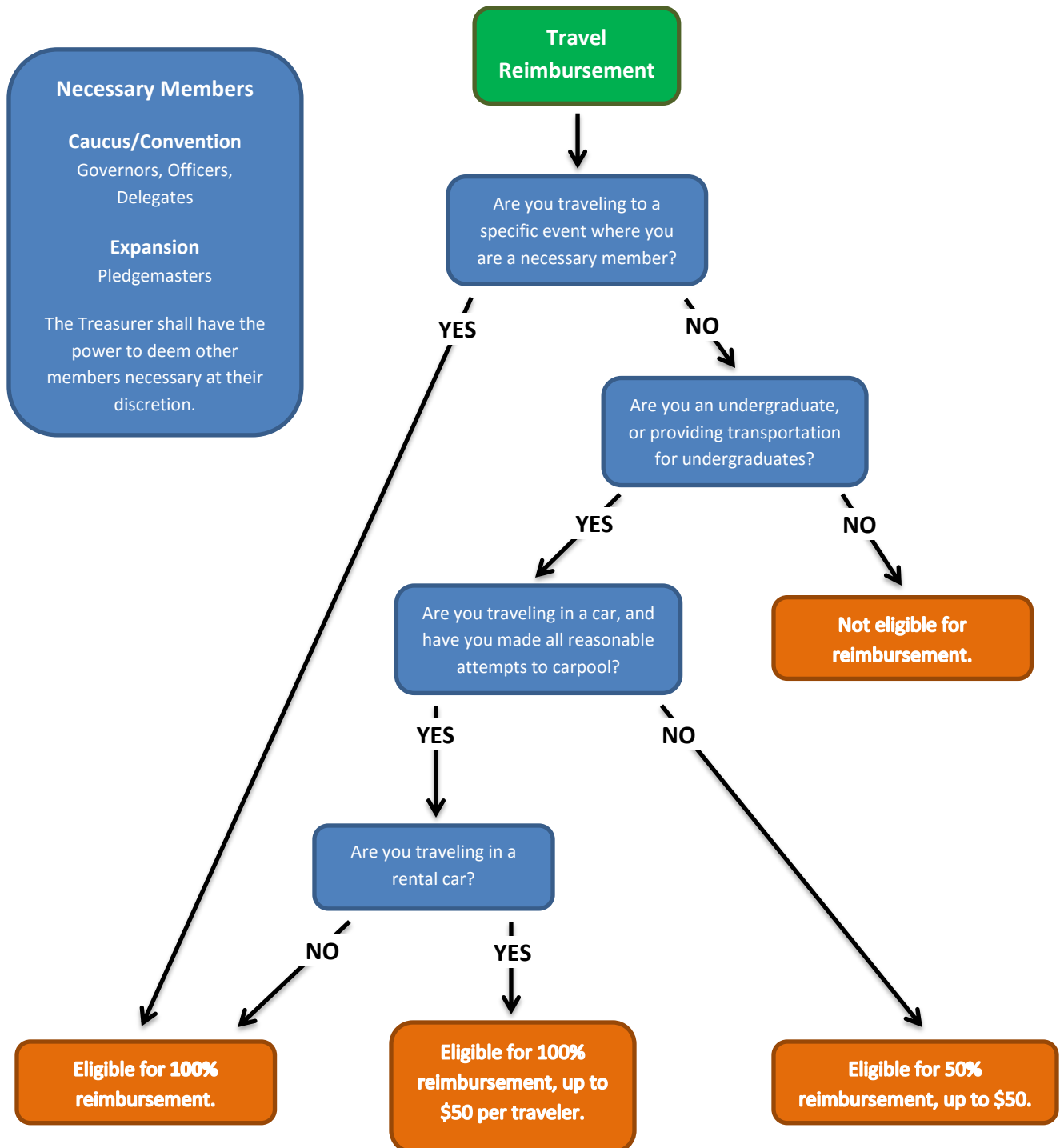


ADPS TRAVEL REIMBURSEMENT POLICY



ALL TRAVEL EXPENSES MUST BE PRE-APPROVED BY THE TREASURER.

ANY TRAVEL EXPENSES INCURRED PRIOR TO RECEIVING PRE-APPROVAL ARE NOT ELIGIBLE FOR REIMBURSEMENT.

This policy is subject to change at the discretion of the Treasurer.